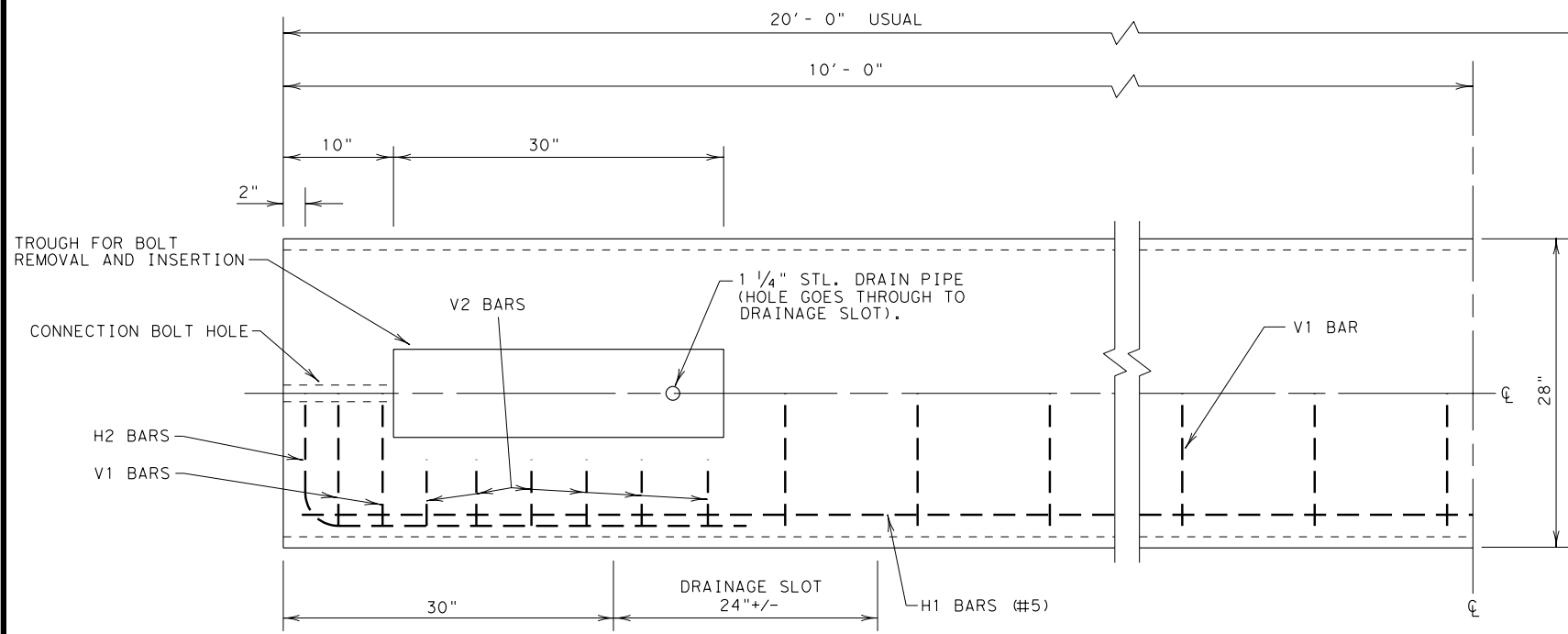


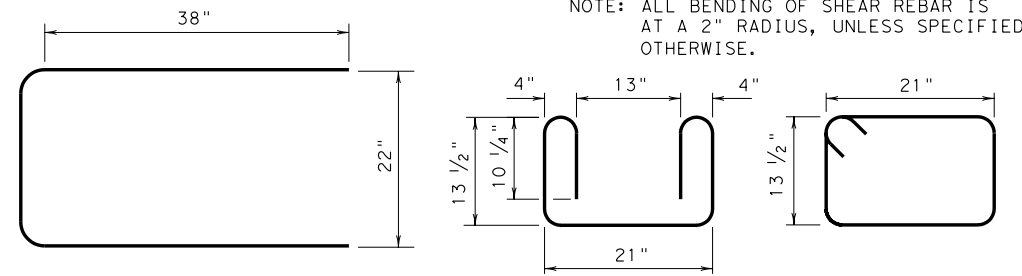
DISCLAIMER: The use of this standard is governed by the "Texas Engineering Practice Act". No warranty of any kind is made by TxDOT for any purpose whatsoever. TxDOT assumes no responsibility for the conversion of this standard to other formats or for incorrect results or damages resulting from its use.

LEVELS DISPLAYED



PLAN VIEW - TYPE 1
(SYMMETRICAL ABOUT CENTER LINES)

NOTE: CONCRETE ON BOTTOM HALF OF PLAN VIEW IS REMOVED IN ORDER TO SHOW DETAILS

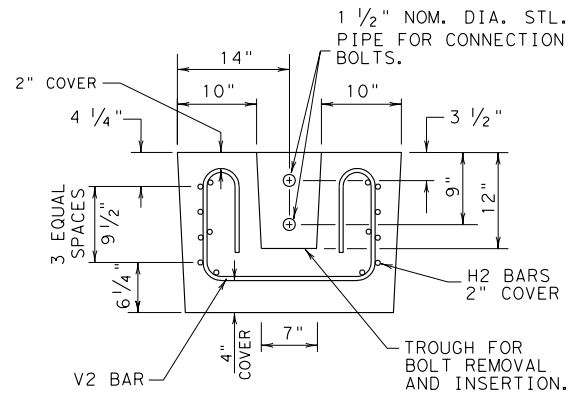


H2 BAR (#5)
(GRADE 60 MIN.)
NOTE: H2 REBAR IS TO BE BENT AT A 3" RADIUS.

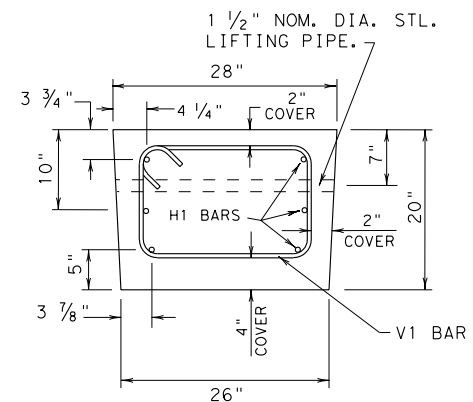
V2 BAR (#4)

V1 BAR (#4)

REINFORCING STEEL DETAILS



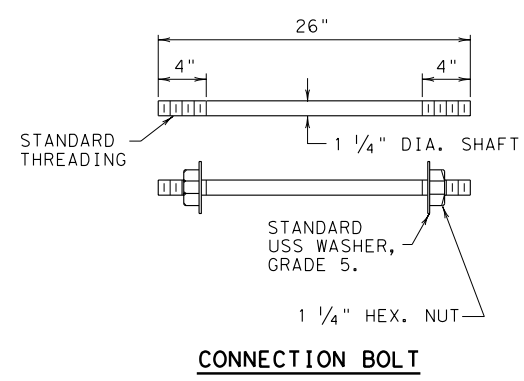
SECTION A-A



SECTION B-B

GENERAL NOTES

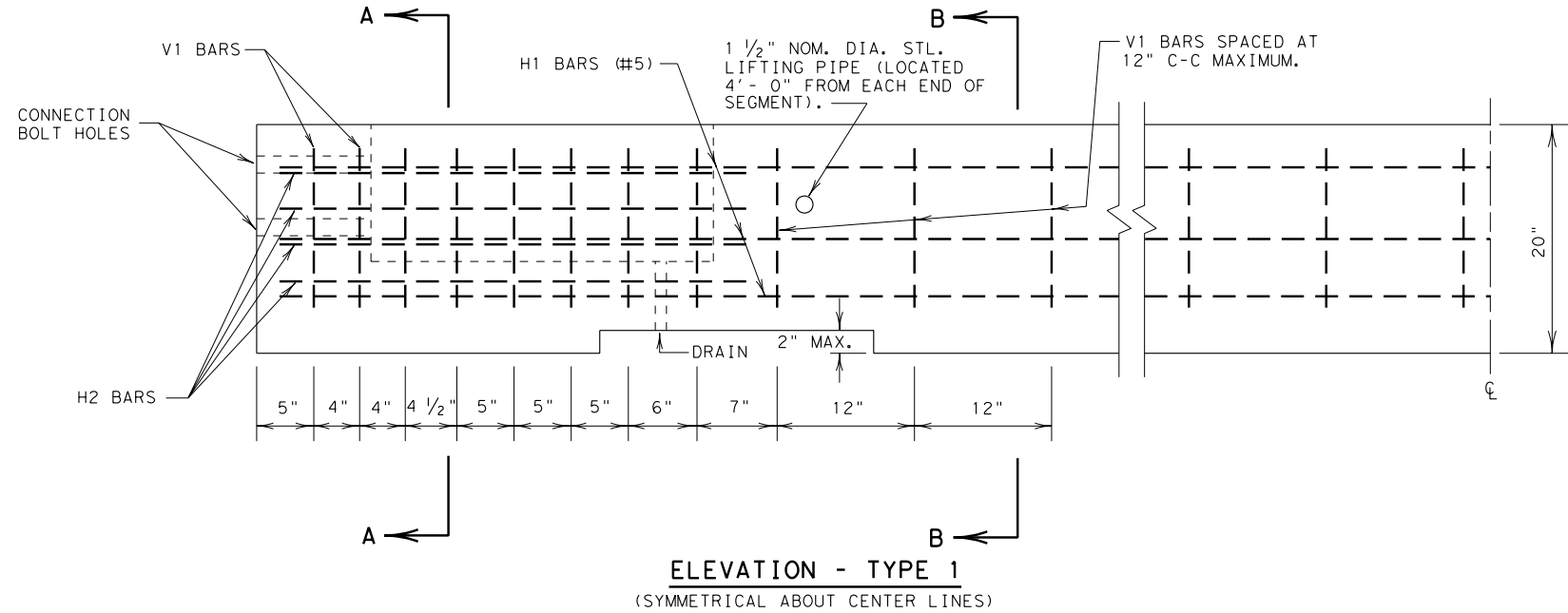
1. BARRIER LENGTH SHALL BE 20 FEET (+/- 1 INCH) UNLESS OTHERWISE SPECIFIED IN THE PLANS.
2. ALL CONCRETE, REINFORCEMENT, ANCHOR BOLTS, BLOCKING, ETC., AS SHOWN ARE CONSIDERED AS PART OF THE BARRIER FOR PAYMENT.
3. ALL CONCRETE SHALL BE CLASS A, C, OR H, UNLESS OTHERWISE SPECIFIED.
4. ALL REINFORCING STEEL SHALL BE GRADE 40, UNLESS OTHERWISE SPECIFIED.
5. CHAMFER ALL EDGES 3/4 INCH, AS DIRECTED BY THE ENGINEER.
6. STEEL PIPE SHALL BE HOT DIP GALVANIZED IN CONFORMANCE TO ASTM DESIGNATION A123. BOLTS, NUTS AND WASHERS SHALL BE HOT-DIP GALVANIZED TO ASTM DESIGNATION A153.
7. BOLTS SHALL CONFORM TO ASTM A36. NUTS SHALL CONFORM TO A307 REQUIREMENTS AND SHALL BE TAPPED OR CHASED AFTER GALVANIZING. BOLTS AND NUTS SHALL HAVE CLASS 2A AND 2B FIT TOLERANCES.
8. THE BARRIER SHOULD BE LIGHT IN COLOR AND SHOULD BE SUPPLEMENTED BY DELINEATION AS DETAILED ELSEWHERE IN THE PLANS.



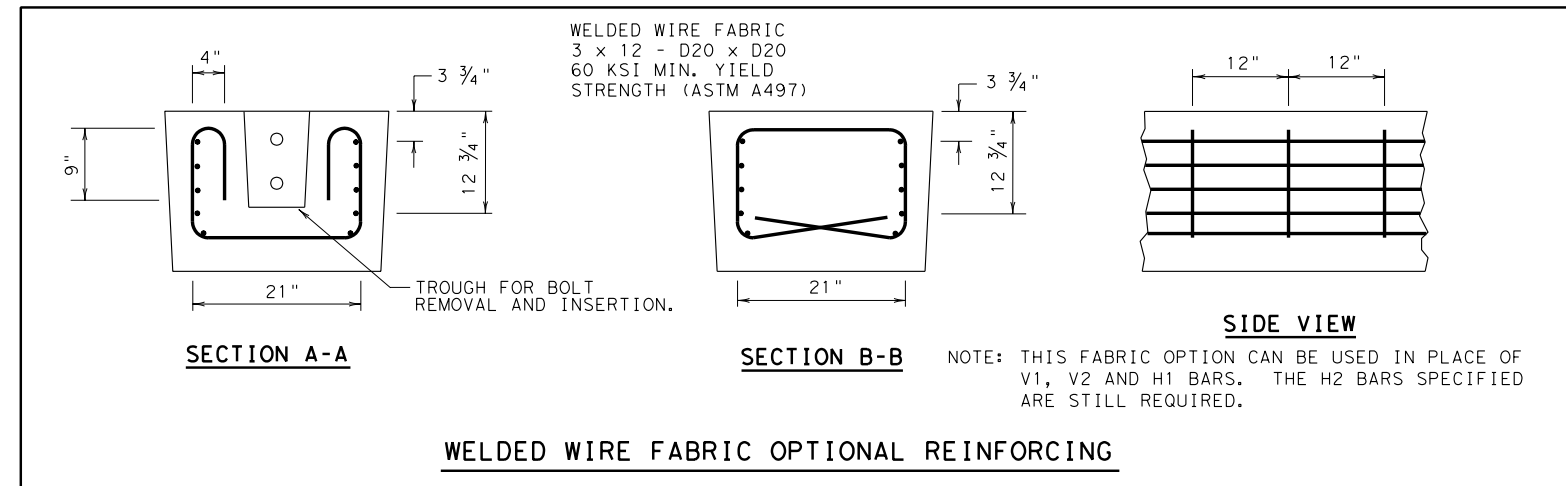
CONNECTION BOLT

FOR CONTRACTORS INFORMATION ONLY

(TYPE 1)		
APPROX. QUANTITIES 20 FT. SECTION		
CONCRETE	CY	2.6
REINFORCING STEEL	LBS	330
TOTAL BARRIER WT.	LBS	11000



ELEVATION - TYPE 1
(SYMMETRICAL ABOUT CENTER LINES)



WELDED WIRE FABRIC OPTIONAL REINFORCING

Texas Department of Transportation
Design Division (Roadway)

LOW PROFILE CONCRETE BARRIER
(PORTABLE AND PRECAST)

LPCB(1)-92
SHEET 1 OF 2

FILE: lpcb192.dgn	DN:	CK:	DW:	CK:
© TxDOT September 1992	DISTRICT	FEDERAL AID PROJECT		SHEET
REVISIONS				
	COUNTY	CONTROL	SECT	JOB HIGHWAY

